

“How To”: Creating Harvest Work Plans on machines equipped with Gen4 & G5 displays

Efficient harvest operations begin with effective planning. This guide explains the step-by-step process of creating and sending Harvest Work Plans directly to Gen4 and G5 display-equipped machines using John Deere Operations Center, and how they can be sent wirelessly to JDLink connected equipment or downloaded for USB import. By creating and sending harvest plans to your fleet you can simplify in-field setup, reduce entry errors, and ensure accurate harvest records are captured automatically.

Creating Work Plans

1. After logging into the John Deere Operations Center, navigate to the 'Plan' tab and select 'Work Planner'.
2. Next to the 'Work Planner' heading, select a crop season (year) and the 'harvest' operation type, then select the '+ Plan Harvest' yellow button. You will then be directed to the creation flow that will guide you through a sequence of planning steps needed.
3. The first step is 'Field Selection' - select the fields you need in either the map or the table view:

Map View: Select one or multiple fields by clicking the fields on the map.

Table View: Select one or multiple fields from the table on the left-hand side. You can make use of the 'Table' button at the top of the list that will expand to a full screen table view, which includes more information such as last crop, variety, product & work.

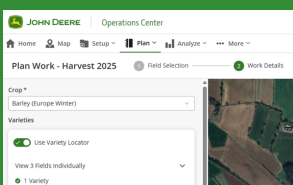
In both views, a scroll bar and a text search function are available along with filters for client, farm, field, crops and varieties, product and work. Once all required fields are selected, press the 'Next' button.

4. The second step is 'Work Details' - entering the harvest work details. Follow the flow diagram below to complete this:

Crops & Varieties

Select the appropriate crop for the fields included in your Work Plan.

The Variety Locator toggle is enabled by default when planning the harvest. If no variety was specified during seeding or if a change is necessary, disable the toggle and manually select the variety.



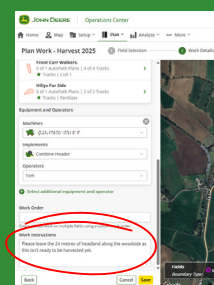
Once all the work details have been completed, press the 'Save' button.

Note: You can always go back and edit a 'Work Plan' before sending it to a machine.

Work Instructions

Add custom information for the operator such as further instructions, hints, contact information, etc.

This information will pop up for operations to acknowledge before starting work.



Guidance

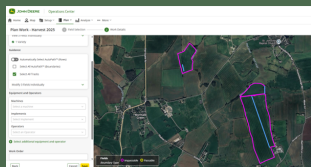
Select one or multiple guidance lines you wish to use for the work.

Guidance lines that have been created for fields in the Land tool under the 'Setup' tab prior to the planning, will automatically be available for use in 'Work Planner'.

If planning for multiple fields, be sure to select the guidance lines for each field.

Option 1:

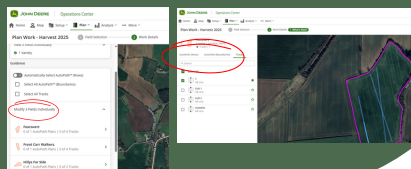
'Select All Tracks' to have all available guidance lines included in the a 'Work Plan'



Option 2:

Modify the guidance on each field individually by clicking on 'Modify Fields Individually'

Select the relevant field/s and move across the guidance tabs to select the ones you need. The starred items will be active when starting work on the display.

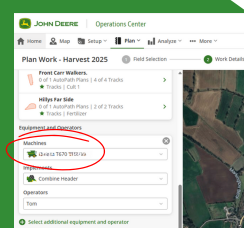


Equipment & Operators

Select the machine(s) that the Work Plan should be sent to.

Select the implement(s) the machine(s) will be utilizing.

Select the operator(s) who will be completing the work.



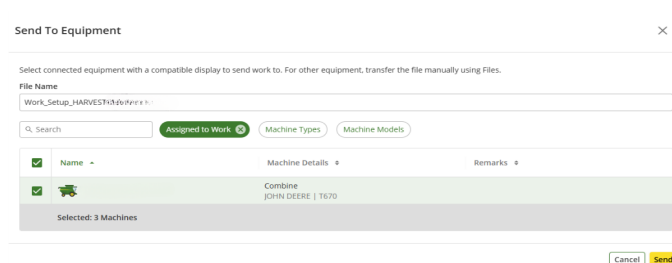
Sending and Downloading Work Plans

In the 'Planned' tab, select one or multiple work plans that you want to send or download and use the 'Send to Equipment' button. This opens the 'Send to Equipment Dialog'.

The table view, displaying the machines, contains the three columns; Name, Machine Details and Remarks. There are two groups of machines: 'Assigned to work', which contains the machines specifically entered in the Work Plan, and 'All Connected Machines', which contains all other JDLink™ connected machines.

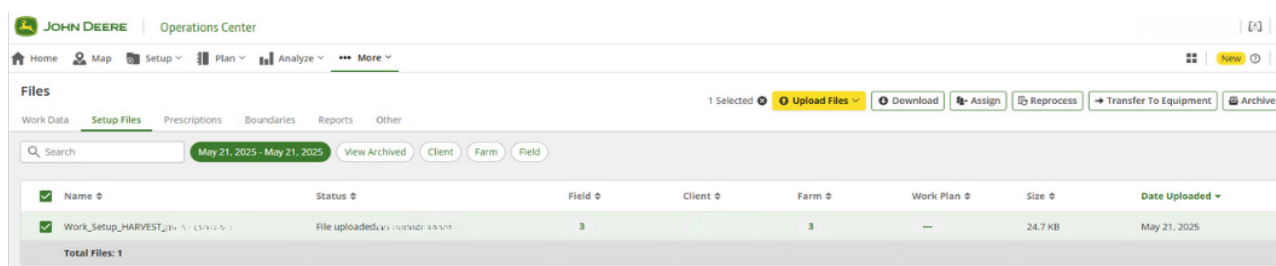
The 'Remarks' column assists with status information for connected equipment. A link to Stellar Support is integrated within this status information. By clicking on the status details, you will be directed to the Stellar Support page to identify any required updates.

To send planned work wirelessly to JDLink connected equipment, select at least one piece of equipment and use the 'Send' button. Equipment enabled with Wireless Data Transfer will receive the work setup file automatically. For equipment not enabled with Wireless Data Transfer, please use Files to transfer the file manually.



The 'Send To Equipment' dialog box is shown. It has a title bar with a close button. Below the title bar, there is a text area with instructions: 'Select connected equipment with a compatible display to send work to. For other equipment, transfer the file manually using Files.' Below this is a 'File Name' field containing 'Work_Setup_HARVEST_2025_05_21_1670'. There are two tabs: 'Assigned to Work' (active) and 'Machine Types'. Below the tabs is a search bar and a table. The table has columns: 'Name', 'Machine Details', and 'Remarks'. There is a green checkmark icon in the 'Name' column. Below the table, it says 'Selected: 3 Machines'. At the bottom right, there are 'Cancel' and 'Send' buttons.

To send planned work to Files to download manually and use for USB import, do not select any machine and use the 'Send' button. Go to 'More' and 'Files', then select the Work Plan .zip file. Use the 'Download' button, select the download location and click download again. Retrieve the file from the selected location and move to a USB drive.



Once the Work Plan has been successfully sent wirelessly to the machine, it will be auto-imported by the display. It is also possible to enable Automatic Work Plan Activation to further improve efficiency and seamless transition from field to field.

Automatic Work Plan Activation

By automatically activating work plans when entering a field, this feature fully automates the in-cab display setup. Operators are able to drive into a field and start their work straight away. The display is automatically setup based on the information entered in the Work Plan, which also ensures the high-quality documentation data. It is no longer required to click 'Okay' to start a Work Plan, that is suggested via a window shade once the equipment enters the field.




Hardware & Software Requirements

This feature is available for Gen 4 & G5 displays with software version 23-2 or newer.

Instructions

The 'Automatic Work Plan Activation' can be enabled in the advanced settings of the 'Work Setup' in the display.

With the Gen 4 & G5 display software version 23-2, the Automatic Work Plan Activation' is defaulted to OFF and needs to be activated manually. The feature will then start work plans automatically when entering a field if the following conditions are met:

-  Operation of work plan matches to that of the connected implement.
-  Planned variety, product, and rate match to currently set variety, product & rate.
-  Planned operator matches the currently set operator.

If these conditions are not met, the operator's input is required. Then, the known window shade appears and guides the user through the setup.

All done! If you have any problems, please contact our Technology team on 07700 152217 or by emailing technology@riponfarmservices.com.

