

“How To”: Setting up a prescription map with your Gen 4 or G5 Display

No two fields are the same and once we know the differences, together we can help build yields. With this objective in mind, variable rate allows fields to be zoned to allow tailored activity. Issues such as soil type and drainage can be analysed, and corrective action can be taken to deliver the correct levels of seed or fertiliser to improve yields. The result is maximum productivity.

Variable Rate control can offer a number of benefits, including:

- Optimises input distribution according to the yield potential of each zone
- Applies precisely the right number of seed, fertiliser or crop protection product
- Ensures consistent growing conditions
- Easy set-up with John Deere Operations Center

We will take you step-by-step through “how to” set up a prescription map with your displays, whether its G5 or Gen 4.

Step 1: Receiving your prescription

Receive your prescription from either your agronomist, or set up the prescription yourself.

Step 2: Setting up your prescription

To input the prescription into the tractor, you can use one of two methods, either manually inputting it into the tractor via USB or pushing the prescription wirelessly through John Deere Operations Center.

MANUALLY VIA USB

1. To do this, you need to put the prescription shape files in an RX folder on the root drive on your memory/USB stick.

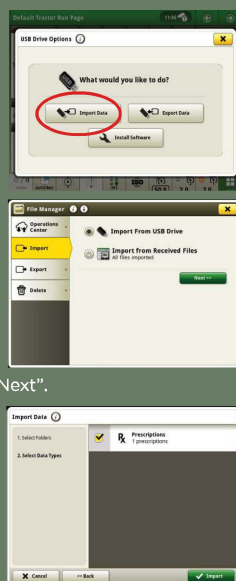
2. Insert your USB into the tractor, the tractor should recognise the USB and ask what to do with it. Click “Import data”.

3. Select “Import from USB drive” then click “Next”.

4. Ensure the folder is selected and click “Next”.

5. Select the prescription via the tick box, and click “Import”.

6. A dialogue box should then appear with the message “Data Successfully imported”, confirming the manual import process is complete.



1. Firstly, ensure your files are in a zipped file.

2. In the Ops Center, click “More” along the top header, then select “Files” from the dropdown menu.

3. Once this takes you through to the page, select the yellow “Upload Files” button on the right hand side of the page.

4. This should then bring up a dialogue box where you can upload your files. Click the “Choose files to upload” button.

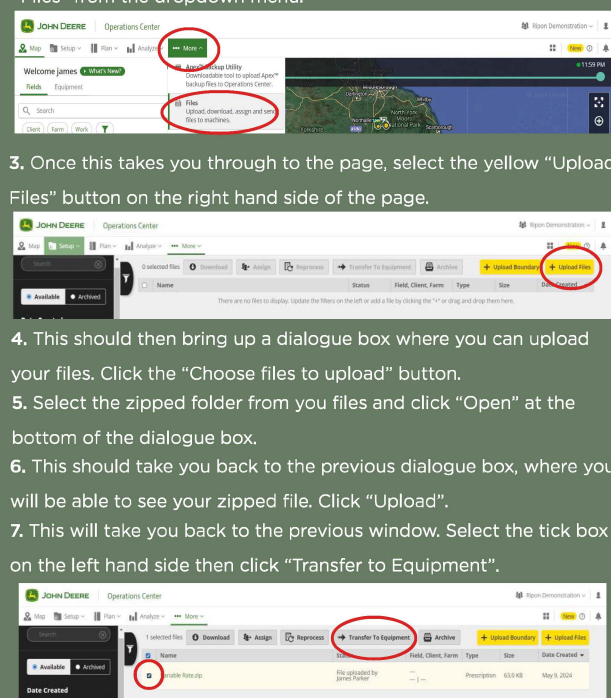
5. Select the zipped folder from you files and click “Open” at the bottom of the dialogue box.

6. This should take you back to the previous dialogue box, where you will be able to see your zipped file. Click “Upload”.

7. This will take you back to the previous window. Select the tick box on the left hand side then click “Transfer to Equipment”.

8. This will bring up a dialogue box to select your JD Link enabled tractor from the list of machines. Once you have, click “Transfer” at

9. This will take you back to the previous window, where the message should say “Operator has imported the file” under the “Status” column.



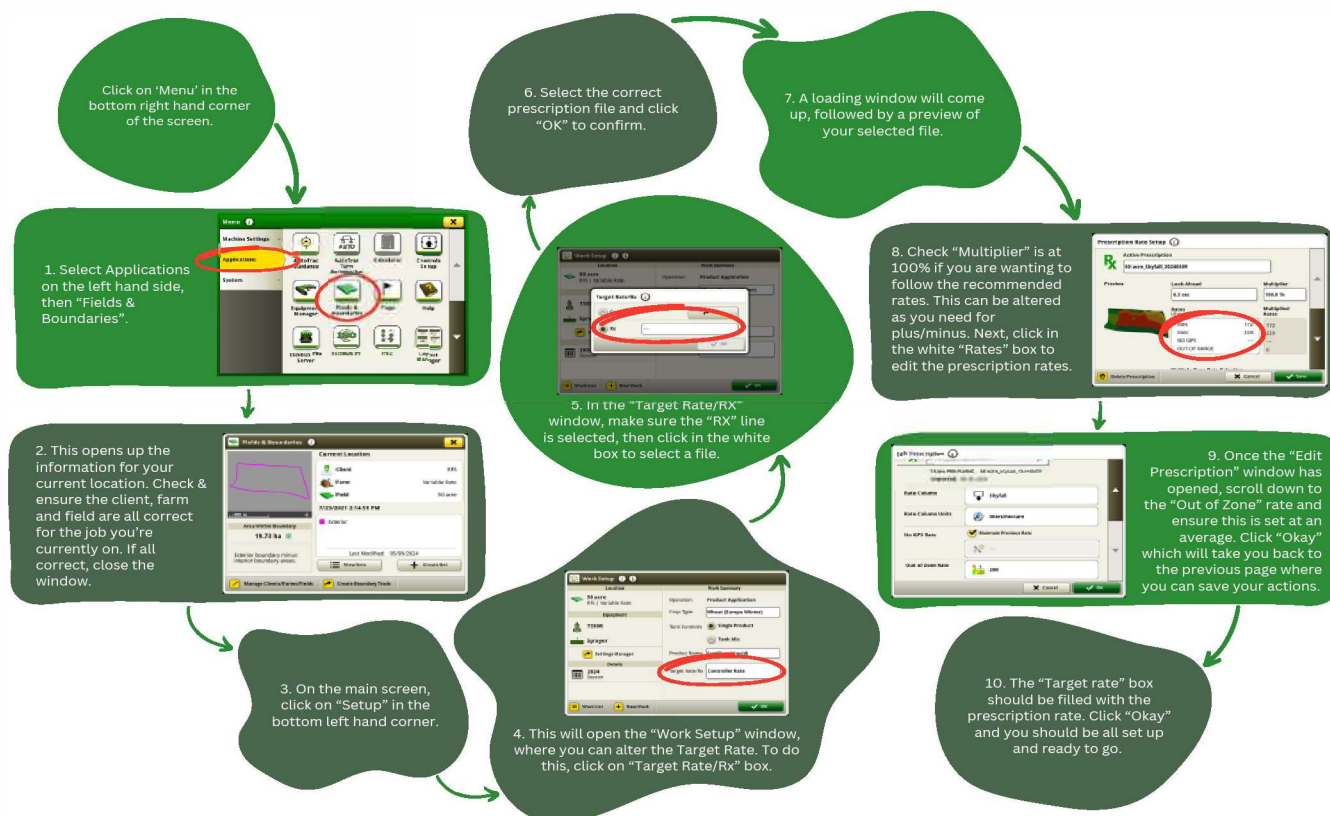
WIRELESSLY VIA OPS CENTER

Step 3: Accepting your prescription on the tractor

Once you have transferred your prescription to your tractor via John Deere Operations Center, it's time to jump on your tractor and accept it.



Step 4: Selecting the prescription for the relevant job



Interested in finding out more? Email technology@riponfarmservices.com or call 07700 152217 to speak with our Technology team today.